

Responses to the NAAC-QUESTIONNAIRE

Sustenance of Initiatives by the IQAC of the College

Name of the Institute: EDUCATION COLLEGE

Address: Vill+PO- Basantapur, PS- Dumkal, Dist- Murshidabad

Place: Basantapur , State-West Bengal, Pin Code:742406

Phone No. Std. Code: 03841, Ph: 230059 Mob: 9732400544

e-male: bes_edu@yahoo.co.in Website: [www: b-e-s.net](http://www.b-e-s.net)

Date of Accreditation: 21/4/2012. Validity Period: 20/4/2017. Grade: B

Sl No	Particulars	Before NAAC Accreditation	After NAAC Accreditation	Details (for year 2007-12)
1	Internal Quality Assurance Cell	Yes	Yes	<p>IQA Cell again have been reconstituted after NAAC visit in our College. Reconstituted on 20/05/2012. Actually it had been established during the academic session 2009.</p> <p>To make it more functional and effective body it has been reconstituted again. The composition of the cell is as follows:-</p> <ul style="list-style-type: none"> -Principal as the Chairman. -Academic in-charge as the Convener/ Member Secretary. -Examination in-charge, two Teaching members of the staff, Librarian, Computer faculty of the college, one member from the Management and an outsider specifically an eminent educationist as an external Expert are the members of the newly formed IQA Cell. <p>The cell sits during examination at least twice in a week and during the entire academic session sits for 6 to 7 times as per the need.</p> <p>The major activities undertaken are enhancing and sustaining the quality of education of the institution, monitoring of academic activities, co-curricular activities, Research and Seminar, analysis of the result of unit-test, analysis of the feedback from students, providing assistance to the poor and backward students, linkage of the college community with neighbors society, assigning responsibility to one of the faculty to monitor progress, intimation and involvement to the parents in case of consistent failure.</p>

			<p>In order to evaluate the achievement of goals and objectives of the Institution makes IQAC, regular provision of discussion about the progress in academic and curricular and co-curricular activities.</p> <p>The plan of action chalked out by the IQAC in the beginning of each year towards quality enhancement and the outcome achieved by the end of the year.</p> <p>Report of 2010-</p> <p>Measures for enhancement of quality of Teacher-educators and staff members of Education College.</p> <p>Assessment of both the B Ed and M Ed Student-teachers performances (2009-10) of the final examination.</p> <p>Analysis of Marks obtained in the different tests.</p> <p>Analysis of the quality of Question papers both for the Formative and Summative evaluation.</p> <p>Report of 2011-</p> <p>Analysis of the feedback received from the Teacher-educators, Peers and members of the practice teaching schools.</p> <p>Analysis of the quality of Question papers both for the Formative and Summative evaluation.</p> <p>Analysis of Marks obtained in the different tests.</p> <p>Report of 2012 till date only:-</p> <p>Quality bench marks and parameters were developed, discussions on holding of Workshops and Seminars were made, discussion on holding of National Seminar of NAAC and preparation of relevant materials, preparation of Annual Quality Assurance Report, Institution to act as a Nodal Agency for quality related activities, procedures and modalities to collect data and information on various aspect of institutional functioning, collection of feedback from the students regarding Syllabus, Functioning style, Improvement in teaching for assuring quality, first mid-term test question paper discussion, adequacy maintenance and proper allocation of support structure and services, research sharing and networking, Credibility of the Evaluation Procedures.</p>
--	--	--	---

2	Date of Establishment of IQAC			In The year 2009 it was established and from last four years IQAC has been functioning.
3	Have you organized NAAC sponsored seminar	No	No	But very near future the Institution is going to organize one National Level NAAC sponsored seminar on the Title:- HIGHER EDUCATION IN RURAL AND BACKWARD REGIONS: PROBLEMS AND REMEDIES.
4	Have you submitted Annual Quality Assurance Report (AQAR) to NAAC	No	No	<p>For the year 2009 -10 & 2010-11:-</p> <p>The faculty members of the institution have tried their level best to create conducive environment for learning and all-round development of the student-teachers by providing them the best Infrastructure, Ample facilities, Learning resources, and encouraging Library use, to experience the challenge and reward of Sport, Spirit of participation and pursuit of excellence through the diverse Sports programmed. A learner-friendly academic atmosphere is maintained in the campus. Various programmes and competitions are organized in the institute which helps the faculty members to know the status of current knowledge of the students of Subjects, general knowledge, reasoning etc. Excursions, Discussions, Seminars, Guest lectures are held from time to time to motivate and encourage the students in their B Ed and M Ed programme. Co-curricular activities like Sports day, Celebrating festivals and days like Teachers' day, Mothers' day, World AIDS' day, etc. are organized and these helps in the development of student-teachers.</p> <p>The institution caters to the diverse learning needs of student-teachers by the use of creative activities, case studies, group discussion etc. And also Faculty members use innovative methods of teaching such as Seminars, Debate, Workshops, PPT and OHP presentations and give a special emphasis on Remedial Teaching.</p> <p>The Vision of the College is to be a centre of excellence by developing benchmark, by applying best practices and institutionalizing the system of continuous improvement.</p> <p>The Education College operates in such an environment, which it is changing for the better-better for the locality and better for the nations as a whole, offering more access with equity and developmental thrust. The Institution, which always in search for excellence, trains the student-teachers well, empower the people of the area to join the national</p>

mainstream, and to be Globally competent, and Value oriented.

The Institution also trains the students to be aware about Ecology and Environment. Keeps the students abreast of the Global trends and changing demands, and accordingly trains them so that they can prepare themselves for the same. The institution offers the subjects keeping the Global trends in mind.

The Institution since its inception is duty bound to obey all the norms and standards of regulatory bodies like NCTE, University of Kalyani, UGC, Govt. of West Bengal and the Govt. of India etc.

The training of the Education College is conducted in such a way to ensure intellectual integrity and academic soundness.

It offers access to the disadvantaged people like physically challenged, scheduled castes, Scheduled Tribes and other Backward classes. It arranges scholarship for the poor and also grants free studentship for them.

Its Admission procedures and Teaching-Learning Methods ensure Equity.

The Institutions' Management always tries to develop its training. For this, it uses up to date technology. It also encourages the students in Self-development.

It conducted training to the student-teachers to be better teachers with values, it helps the development of the community and the nation. It trains the students in such a way to ensure the Core Values like Truth and Righteousness.

The institution analyzed the actual needs of the students for their employment and special emphasis in those areas of the Curricular of the affiliated Kalyani University, which are needed more. In addition to the curricular activities the Institution encourages the students to take part in extra-curricular activities to be more eligible for empowerment. These were the quality sustenance and quality enhancement measures taken by the institution in its limited scope under the control of the regulatory bodies.

The criteria for admission of the institution are very clear; maintain complete adherence to the decisions of the Regulatory Bodies, Equity, ccess and transparency are also maintained.

The institution through its entire academic activities engages

student-teachers in active learning and learning activities are student-centered by using the learning resources like Library resources, Web site, Focus group, Individual projects, Simulation, Peer-teaching, Role-playing, Practicum, Term-paper writing and presentation, Extra-curricular activities, Micro-teaching, Internship teaching, Data collection, Dissertations, Education fair and Exhibitions, Seminars and Workshops and Field Survey and Report writing etc.

It ensures the imparting of knowledge through shared authority between the student-teachers and Teacher-educators. Here the Teacher-Educators become facilitators. They are always available to give advice and encourage the Student-teachers and helping them but encourages the student-teachers to learn by themselves. It provides requisite platform to the Student-teachers to become confident and self-reliant.

The major initiative of the institution for ensuring personal and Professional/Career development of the Teacher-educators of the institution. Qualities of the Teacher-educators:-

Total Faculty:-17(till date)

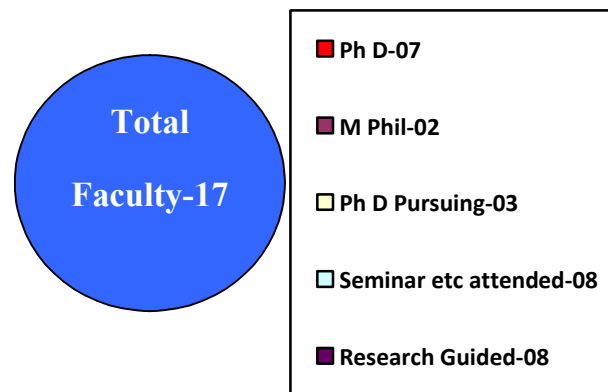
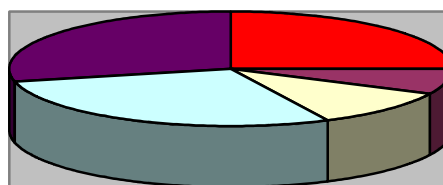
Ph D Holder: - 07.

M Phil: - 02.

PhD. Pursuing: - 03.

National level Seminar/Work shop/ Orientation/Refresher course etc. attended by the no. of faculties are: - 08.

Research Scholars guided and produced (at M Ed, M Phil and Ph D Level) by the faculties are: - 08.



The Teacher-educators are also engaged for Consultancy programme, Extension activities, Community activities, Collaboration programmes to enhance quality Education not only for its College Education but for the Society as a whole.

The Institution also possessing best Infrastructure, Learning Resources and conducive campus.

Last four and two years both B Ed and M Ed students result respectively:-

B Ed :-

M Ed :-

2007-2008
 Total Appeared 93
 50% to 60%=19
 61% to 85%= 69

2007- 2008
 Total Appeared
 50% to 60%= 0
 61% to 85%= 0

2008-2009
 Total Appeared 93
 50% to 60%=14
 61% to 85%= 77

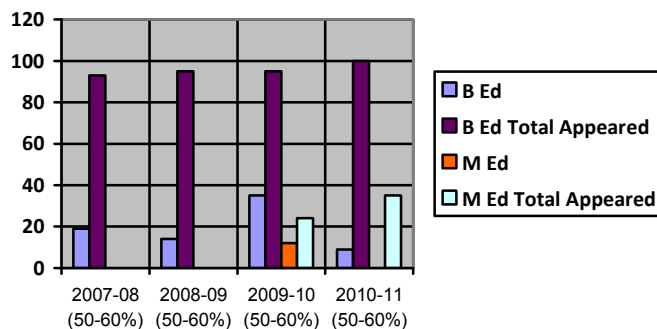
2008- 2009
 Total Appeared
 50% to 60%= 0
 61% to 85%= 0

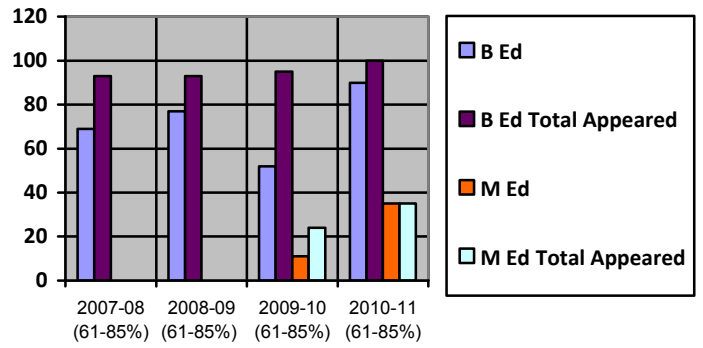
2009-2010
 Total Appeared 95
 50% to 60%= 35
 61% to 85%= 52

2009- 2010
 Total Appeared 24
 50% to 60%= 12
 61% to 85%= 11

2010-2011
 Total Appeared 100
 50% to 60%= 9
 61% to 85%= 90

2010- 2011
 Total Appeared 35
 50% to 60%= 0
 61% to 85%= 35

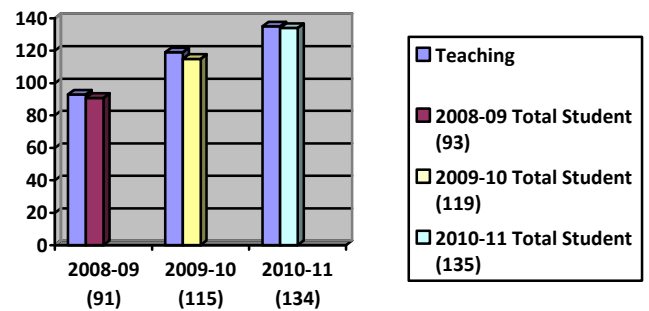
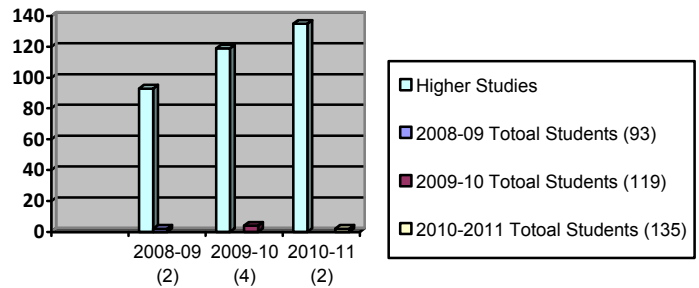




LAST THREE YEARS PERCENTAGE OF STUDENTS FOR FURTHER STUDIES/ CHOOSE TEACHING AND ANY OTHER PROFESSION AS A CAREER:-

Following are the estimated percentages of Students-teachers going for further studies and choosing teaching as career for the last 3 years

	2008-09 (%)	2009-10(%)	2010-11 (%)
Higher studies	2	3	1
Teaching	98	97	99



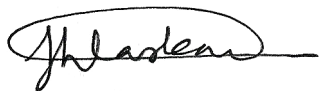
The Institution constituted different committees to confirm the quality Education. The meetings held and the decisions

				<p>are made, regarding Academic Management, Finance, Infrastructure, Faculty Research Consultancy, examination etc. The different committees are like Governing Body, Staff Council, Academic Council, Internal Quality Assurance Cell, Students Council, Cultural Committee, Magazine and Publication Committee, Games and Sports Committee, Library Committee, Grievance Redress Committee, Education Fair Committee, Placement Cell and Alumni Cell etc.</p> <p>The committees sits as and when required discuss the issues, make decisions, communicate these decision with all the concerned and implement these to sustain and enhanced all round quality of services.</p> <p>The institution to ensures the quality of its administration and for quality production follows strictly the norms and regulation of the different regulatory bodies as well as the feedback mechanisms also in vogue to collect, collate and analyses data from student-teachers, Professional Community, Alumni and other Stake holders on the programmes of quality; analyses the data and places the findings through the principal to all the concerned for further improvement and also follow up it.</p>
5	Alumni Association	Yes	Yes	<p>NO. OF MEMBERS: - 37.</p> <p>AMOUNT GENERATED: - 3700.00.</p> <p>PROGRAMME ORGANISED: -</p> <p>2011= TWO,</p> <p>Organization of re-union. Discussion about the ways to connect the passed out student-teachers.</p> <p>2012=TWO(till date),</p> <p>General meeting, Application for Registration under West Bengal 1961 Societies Registration (xxvi Act.)</p> <p>Application for the Bank Account of Alumni in the name of college Accountant, Alumni president and Secretary of Alumni. Plantation in the college campus, cleanliness drive. Participation in the celebration of important days, proposed development/ change of curriculum, admission rules regulations according to the new age demands/ trends of the both national and global society.</p>
6	Placement Cell	Yes	Yes	<p>No. of Students employed: 339 (3 years B Ed and 2 Years M Ed)</p>

7	Career Guidance Cell	Yes	Yes	No. of Students Guided: 440 (4 years B Ed and 2 Years M Ed)
8	Personal Counseling Cell	Yes	Yes	No. of Students Counseled=50. What are the major Problems encountered? The followings are the major problems encountered through personal counseling:- Problems of absentminded in the classes. Barriers of Medium of Instruction. Imbalanced Development (Lack of proper all round development). Mental Health and Emotional problems: - Worries, Anxieties, Negative attitudes, Frustration, Stress etc.
9	Mentor/Tutor System	Yes	Yes	Number of Students benefitted: - 16.
10	Student Feedback Mechanism	Yes	Yes	What is analyses/outcome: - The Institution collects the feedback from the Student-teachers on prescribed format. The Teacher-educators collate and analyses the data and places the findings through the principal. Out Come:- Uses the feedback data for necessary information and quality improvement. The respective Teacher-Educators accept the suggestions, when the Principal very personally inform the Teacher-Educators' their weak point as well as strong point identified by the Teacher-trainees.
11	Internet Facilities	Yes	Yes	Speed: leased/16mbps. Free

12	Grievance Redressed Cell	Yes	Yes	<p>No. of cases solved internally:- In the 2012-13 session are 10(ten).</p> <p>Cases are as follows:-</p> <p>Men Hostel's water and Cooking problems redressed.</p> <p>In both the hostels reduced gaps among the students of different SES background and communities.</p> <p>Complaints made by the students in the day to day functioning of the college.</p> <p>Grievances related to allotment of Work Education Method paper.</p> <p>Problem related to pure drinking water regular supply.</p>
13	Open access in Library	No	No	Fromdd/mm/yy NA.
14	Remedial Courses	Yes	Yes	During the last 3 years (2008-09, 2009-10 & 2010-11 : - 150 classes.
15	Hostel Facilities (Men/Women)	Yes	Yes	Capacity-Men. 90 Women.45
16	Gymnasium	Yes	Yes	For men: Multi-gymnasium is open for Boys For Women: Multi-gymnasium is open for Girls
		No	No	
17	How frequently the websites is updated			As and when required.
18	No. of faculty development programme	Workshop/ orientation	Subject Specific/General	<p>Workshops/Orientation:-</p> <p>During 2012 faculty members have attended one Workshops organized to orient the staff members of MODEL SCHOOL OF BASANTAPUR,DHUMKAL on 04.09.2012</p> <p>Subject: - On the School subjects.</p> <p>One of the Faculty members presented on the two topics:-i. RELEVANCE OF GUIDANCE AND COUNSELING IN SCHOOL.</p> <p>II. FORMAT OF THE UNIT PLAN AND DAILY LESSON PLAN.</p> <p>Rest 10 (ten) no. of Faculty members presented the paper to</p>

				<p>orient the teachers of that particular School on the topic: DEVELOPMENT OF LESSON PLAN IN THE SUBJECTS HISTORY/GEOGRAPHY/MATHS./LIFE SCIENCE/ ENGLISH/BENGALI/DRAWING AND PAINTING PRESENTED BY respected teachers of the subject concerned.</p> <p>Two Consultancy programmes also organized in the Schools NATIONAL ENTRANCE J.R HIGH SCHOOL, BAJITPUR AND BHATSALA HIGH MADRASAH on the date 06-08-2012 & 30-08-2012</p> <p>On the topics FRAMING OF QUESTIONS FOR CRITERION TEST AND NORM-REFERENCED TEST ON THE DIFFERENT SCHOOL SUBJECTS. All the faculty of Education College actively participated in the consultancy programme.</p>
19	Support staff training programmes organized	Computer Literacy		<p>Computer Literacy: The ICT Teacher-educator trains other staff how to use Power point presentation during classroom situation to transact curriculum.</p> <p>Any other Specify:</p> <p>Yes, training has been given to the teaching staff how to browse Related Literature on the different subjects from different sources of internet.</p>
20	NAAC Peer team Recommendation Implemented		60%	NAAC Peer team recommendations 60% implemented till date. Rests are on the way of process of implementation.



Jakir Hussain Laskar

Member Secretary of IQAC

Education College, Basantapur
 PO- Basantapur, PS-Dumkal
 Dist-Murshidabad, Pin-742406
 (West Bengal)
 Mob. 9233451822
 03481-230059(O)
 E-mail: jhaakif@gmail.com



Dr. Brojogopal Chand

NAAC, Co-ordinator

Education College, Basantapur
 PO- Basantapur, PS-Dumkal
 Dist-Murshidabad, Pin-742406
 (West Bengal)
 Mob.: 9475038709
 03481-230059(O)